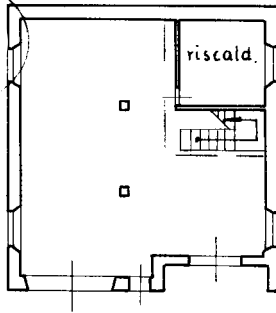
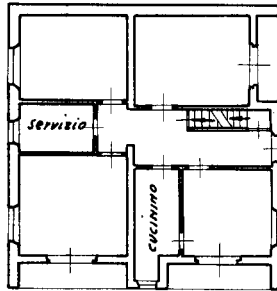


PIANO TERRENO:
(seminterrato)



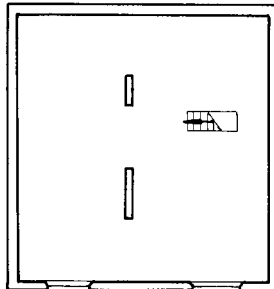
$h = \text{ml. } 4.00$

PIANO PRIMO



$h = \text{ml. } 2.83$

SOTTOTETTO



$h_{\text{min}} = \text{ml. } 0.40$

$h_{\text{max}} = \text{ml. } 2.00$

ORIENTAMENTO



SCALA DI 1:200